

H-2000 User Manual

Hydrogen Inhalation Device

- Before setting up your device, please carefully read all the safety precautions and instructions.
- Failure to comply with all the precautions may result in the loss of warranty coverage. Service fees may apply for any A/S services.

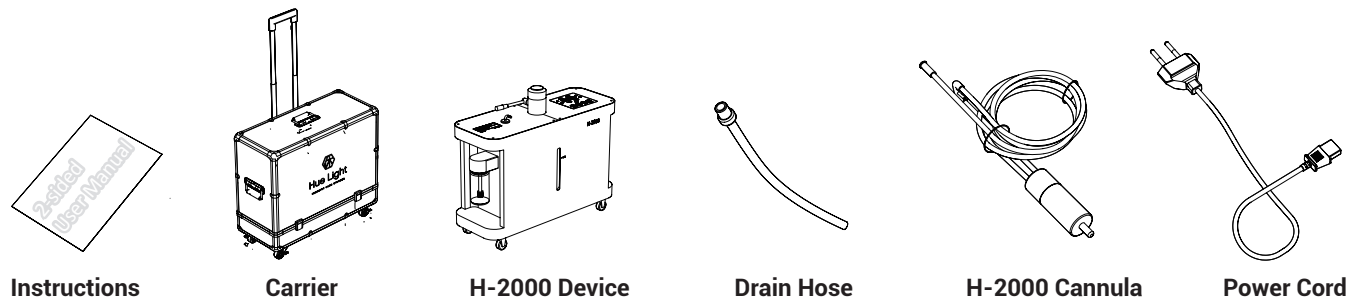
The H-2000 is a polymer electrolyte device that generates 99.97% pure hydrogen and oxygen gas (at least 2000 CC per min). For questions about the device, malfunctions, warranty concerns and/supplies, please contact your local distributor or Hue Light's customer service center at info@huelightusa.com

Power: A/C 100-230V (0.9kVA) 50-60Hz



Warranty Notice: Your Hue Light H-2000 warranty will not be valid for malfunctions due to the following reasons: 1) disassembling the device without authorization, 2) natural disaster, 3) Failing to follow the instructions, and 4) user carelessness.

Components



Precautions

When the gas is generated (H₂/O₂), the device does not store gas. However, spark may occur due to the reasons below; please use with caution.



Do not place the device near flammables or open flame



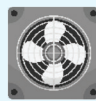
Do not block the opening of the outlet (where the gas comes out)



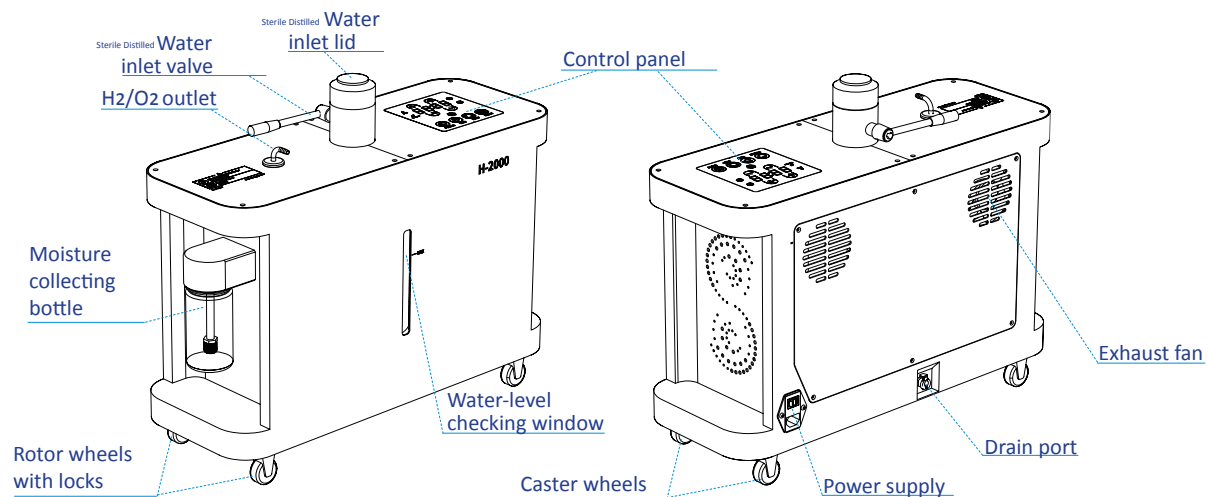
ONLY use **sterile distilled water** in the device



Use the device at normal indoor temperature and humidity (not too dry).



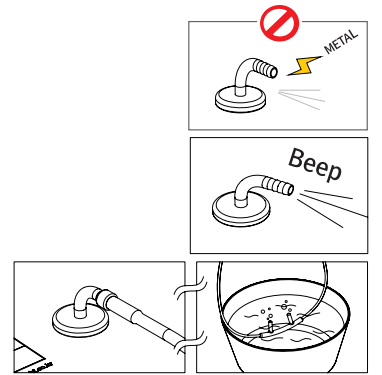
Be sure to ventilate the indoor air regularly. Only use the device in a room with proper ventilation.



Precautions: Parts

1. H₂/O₂ Outlet

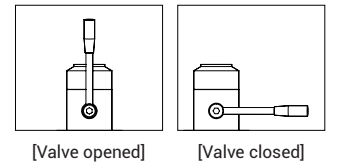
- The outlet is stainless steel. If metal comes in contact with the outlet during operation, sparks may occur.
- If the cannula is not connected to the device, a beeping sound from the gas outlet port occurs. As the gas is naturally released, simply connect the cannula to the outlet port shown in the diagram.
- To test whether the device is properly generating the gas, insert the cannula into a small bucket of water. Bubbles will form, if the gas is generating properly.



2. Sterile distilled water inlet valve

When filling the water tank with the sterile distilled water, open the inlet valve and carefully pour the sterile distilled water into the chamber. After filling the tank to 1L, close the valve by placing the lever back to the horizontal position as shown in the diagram.

***Only pure sterile distilled water without any additives should be used.**



3. Sterile distilled water inlet lid

After filling the water, close the lid to prevent any object/substance from entering the water tank. A netted filter in the water inlet prevents large objects from entering the tank.

4. Control panel

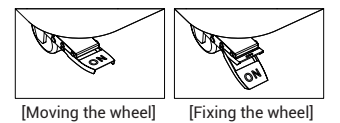
The control panel touchscreen is very sensitive to touch. Therefore, please do not try to control it with a glove on and/or a wet finger. Never place objects and/or use excessive pressure on the panel. This can cause device malfunction.

5. Moisture-collecting water bottle

You should always fill the sterile distilled water to the minimum level to maintain performance. The water level will gradually increase as you operate the device. If the water reaches the maximum level, please empty the bottle and fill it up with sterile distilled water to the minimum level to restart the device. **Normal occurrence: The water in the cooling water bottle may gradually return back to the water tank inside the device when the device idle for long periods.**

6. Rotor wheels with locks

There are two rotor wheels on the left underside. After moving the device, lock the wheels in place to lock the device in one place.



7. Caster wheels

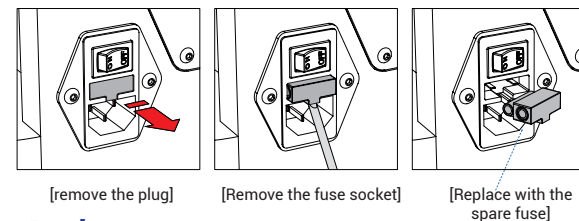
There are two caster wheels on the right underside for easy movement. These wheels do not lock.

8. Water-level checking window

Use the water-level window to monitor water levels. During the operation, you would see the bubbles forming.

9. Power supply

Fuses are there to protect the device and the user from voltage imbalance, short circuit and electrical grounding issues. In some countries and/or facilities, if the electric quality is not stable and/or electrical grounding issues occur, the installed fuse would breakout and the device may not turn on. Please replace the fuse following the procedures below.



Spare fuse is stored inside the socket. After replacing the old fuse with the spare fuse, push the socket all the way in. Dispose of old fuse responsibly. Fuse specification: $\varnothing 5 \times 20$ mm (about 0.79 in) 10A

10. Drain port

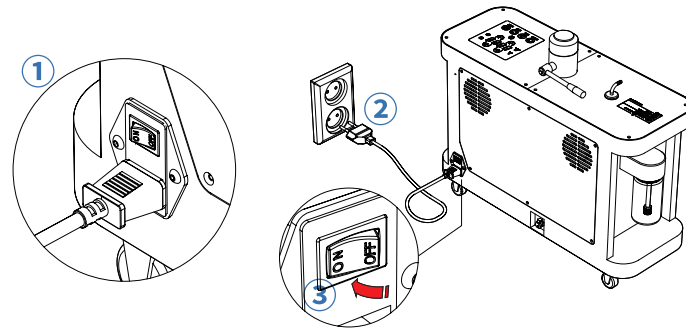
When draining the water, follow the instructions indicated on the left side of the drain. **Never drain during operation.** This may cause system malfunction. After draining the water, make sure to remove the drain hose to prevent water from draining when filling the tank with a new sterile distilled water.

11. Exhaust fan

During operation, warm air may be emitted from the exhaust fan. Please place the device at least 10 cm away from the wall.

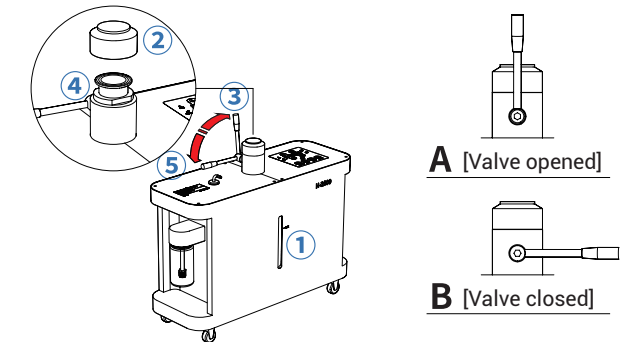
Connect the power

- 1 Connect the power cord to the device.
- 2 Connect the power cord to the outlet. (Highly recommended: Use a power surge protector.)
- 3 Turn on the power switch.



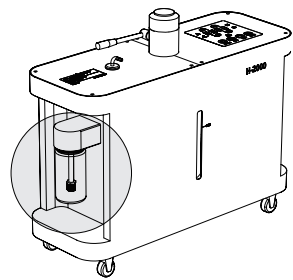
Fill the water tank

- 1 Check the water level via the display window.
- 2 Remove the lid from the water inlet.
- 3 Turn the valve up to a vertical position to open the inlet opening.
- 4 Carefully add sterile distilled water into the tank up to 1 L. Watch the water level through the display window.
- 5 Turn the valve down to a horizontal position to close the inlet opening.
- 6 Close the lid.

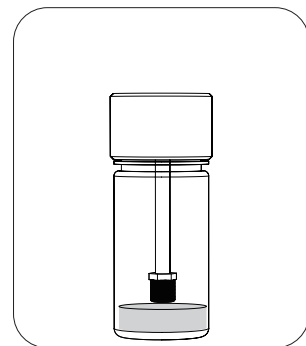


Fill up the cooling water bottle

Always make sure that the device is in standby/ pause mode.

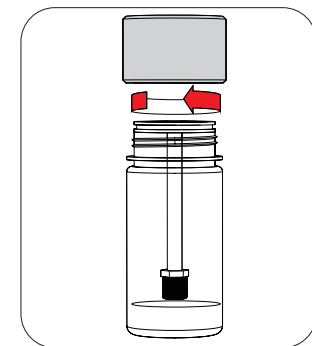


- 1 Check the water level.



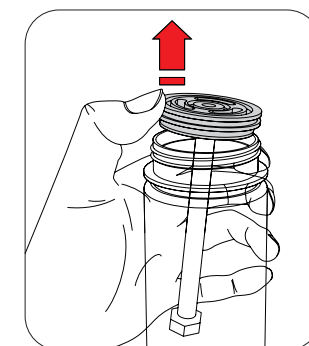
First-time users: There should be no water inside the cooling water bottle

- 2 Twist the bottle to detach it from the device.



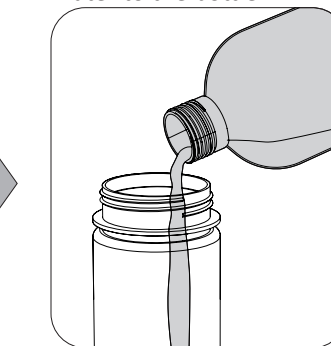
Turn the bottle clockwise to detach it from the device. Be sure to hold the base of the bottle to prevent it from dropping.

- 3 Remove the lid.



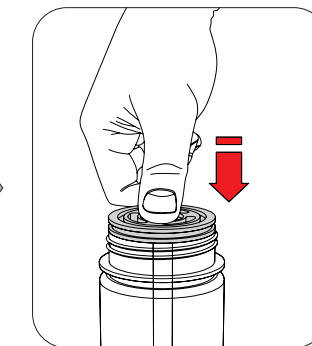
The sealed lid can be removed by pushing up the top indented groove.

- 4 Add sterile distilled water to the bottle.



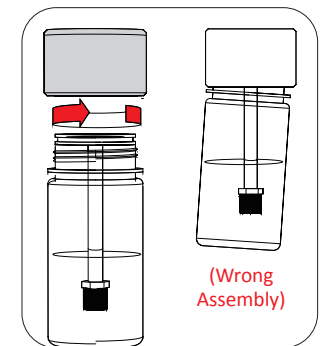
Fill it up to the minimum level. Do not add any additives and/or other substances (aromatic oils, etc.).

- 5 Close the lid.



Tightly close the lid to seal it.

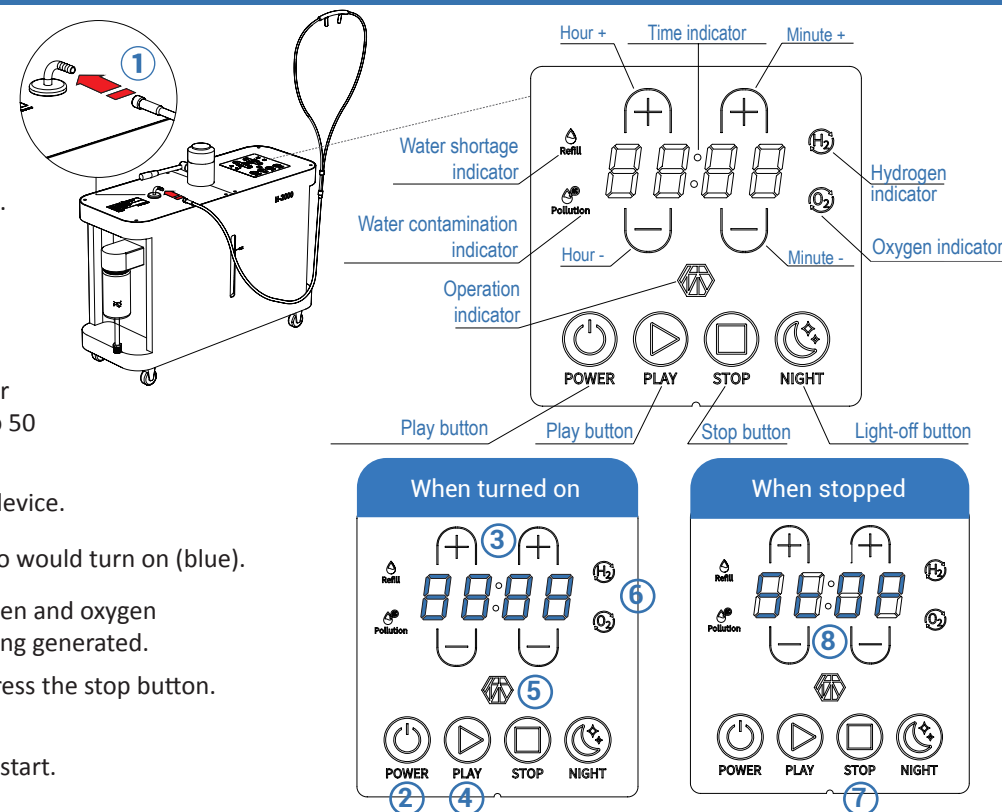
- 6 Reattach the bottle to the device.



Carefully place the bottle vertically up to the cover and twist counterclockwise to lock it up in place.

Operate the device

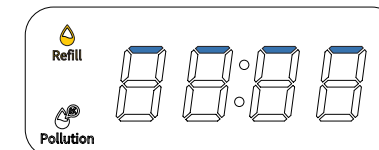
- 1 Connect the cannula to the gas outlet.
- 2 Press the power button to turn the device on.
- 3 When the timer is on, set the time. (Max: 5 hrs 50 min) (Hours can be set up to 5 hours in 1-hr interval, and minutes can be set up to 50 minutes in 10-min intervals.)
- 4 Press the play button to operate the device.
- 5 When the device is operating, the logo would turn on (blue).
- 6 After 10 seconds of operation, hydrogen and oxygen indicator turns on indicating gas is being generated.
- 7 If you would like to stop the device, press the stop button.
- 8 The time indicator screen will STOP. To resume, press the play button to restart.



Troubleshooting: H-2000 stopped working

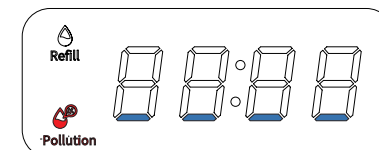
* Check if the set time has ended

- 1 Lack of water



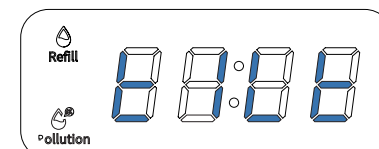
* When the water shortage indicator is on, check the level of water in the tank and add 1L of sterile distilled water to the water tank. The water shortage indicator is connected to a sensor that monitors the level of the water.

- 2 Water contamination



* Check for water contamination. If the water contamination indicator is lit, drain the water and refill the tank with a sterile distilled water. Be sure to change the water inside the moisture-collecting bottle after clean drying it. The water contamination indicator does not indicate that the generated gas is contaminated. This indicator is to protect the polymer electrolytic cell inside the device.

- 3 Tilt



* For safety reasons, when the device is tilted, operation stops. The screen shows 'tilt'. To resolve, level the device and press play button again.



After the issue has been resolved, press the play button to resume operation. The device does not automatically restart.